

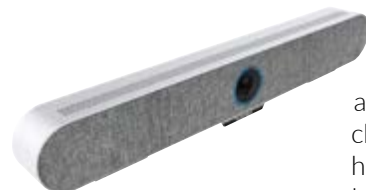
AVAILABLE ACCESSORIES



The **TouchView Enterprise PTZ Camera** features a wide angle no distortion lens, 4K ultra-high definition video conferencing camera with large condenser lens, 360 degree rotating EPTZ, a folding bracket, and USB 3.0 connection.



The **TouchView Interactive 1080P Web Camera** has 3MP resolution, with fluid HD streaming video. Wide dynamic range gives high quality image, even in back-lighting. The folding, stretchable clip design allows easy affixing in the location of choice.



The **TV-EPTZ-CAM-ENT** is an all-in-one 4K ultra HD video conferencing with intuitive, plug and play USB display. Utilizing a built-in imported HD all-in-one chip and equipped with 1/2.5" high quality sensor and 4K Ultra HD lens, TV-EPTZ-CAM-ENT is capable of streaming at up to 3840*2160P at 30FPS.



The **TouchView Interactive TV-DCAM-V10 Document Camera** has the ability to display details anywhere from close-up views to full shots of various 3D objects. Features include flexible, multi-joint body, auto-focus camera, Built-in Microphone, and LED dimmer button.



The **TouchView Interactive Wireless Speaker Microphone** is a pro-audio quality, omni-directional device with stunning sound quality and reliable voice replication in a professional streamlined package. Industry leading full-duplex, EMI and AGC technology.



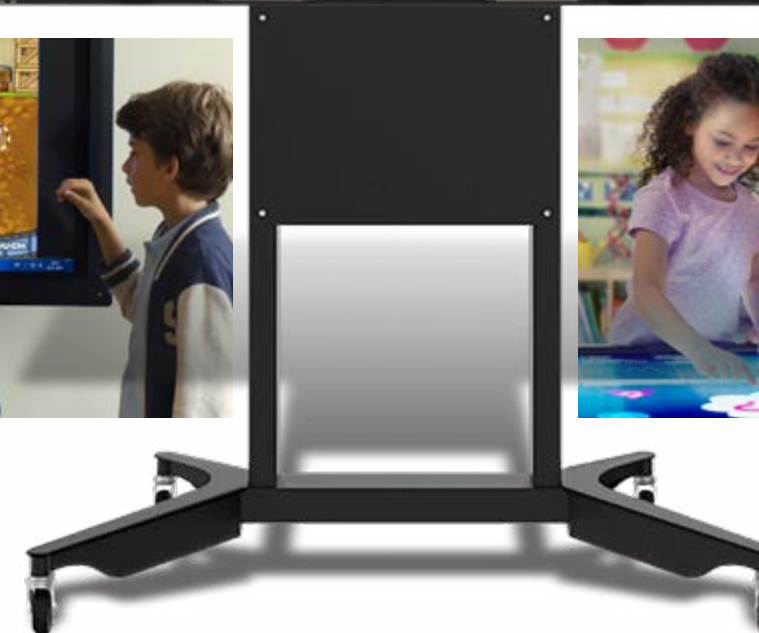
The **TouchView Wired Speaker Microphone** allows for easy integration for any audio and video conferencing application. The clear voice performance can be used with VoIP soft-phones and any other application that requires two-way audio via USB.



The **Intel® Open Pluggable Specification (OPS) PC with G3 Intel® Core™ i5 Processor** is designed to turn your Touchview Interactive display into a Windows all-in-one unit featuring the 10th Generation "Comet Lake" Intel® Core™ i5-10210U Processor, with 8GB of 2400MHz DDR4 RAM (up to 32GB), an ultra fast 128GB SSD Drive (up to 512GB), 4K Imagery at 60Hz playback, and an HDMI Out, secondary display connection.



The **Intel® Open Pluggable Specification (OPS) PC with G3 Intel® Core™ i7 Processor** features a 10th Generation "Comet Lake" Intel® Core™ i7-10510U Processor, with 8GB of 2400MHz DDR4 RAM (up to 32GB), an ultra fast 128GB SSD Drive (up to 512GB), crystal clear 4K imagery at 60Hz playback and an HDMI Out, secondary display connection.



EXPERIENCE THE FUTURE OF INTERACTIVE LEARNING AND COLLABORATION



www.touchview.com | 1-833-TOUCHVW (868-2489)
830 West Chestnut Street, Brockton, MA 02301

1-833-TOUCHVW (868-2489) | www.touchview.com

TouchView[®] Interactive **ULTRA SERIES G2**



-  Ultra High Definition 4K resolution
-  Responds to 20 simultaneous points of touch
-  Embedded WiFi; Windows, MAC, and Chrome compatible

TouchView ULTRA is the next generation of interactive touch panels for education and business environments. The core of all our products is scalable ease-of-use. From intuitive remote controls with limited buttons matching the panel controls, to an engaging user interface, to software solutions designed for security and collaboration, the TouchView ULTRA addresses the needs of all users.



Our leading-edge displays are fully interactive to

empower and engage users. The 4K resolution, 20 points of touch, and compatibility with all software and operating systems ensures the ULTRA is at home in any environment.

Loaded with easy-to-use tools and applications, the ULTRA series is available in sizes from 55" to 86". In addition to the system on chip Android operating system, the ULTRA can be used with a Windows OPS standard, slot in PC providing flexibility in any work or education ecosystem.


TouchView ULTRA series includes a perpetual license for OKTOPUS software for content creation and presentation. We even provide the ability to import lessons from other sources or choose premade lessons.

All TouchView ULTRA series panels come equipped with TouchView Mobile Device Management. This Enterprise level solution provides security, remote trouble shooting, and the distribution and monitoring of applications and hardware.



TouchView[®] Interactive **LITE SERIES**



-  Ultra High Definition 4K resolution
-  Responds to 20 simultaneous points of touch

TouchView LITE provides all the power of anytime, anywhere collaboration in a streamlined, budget friendly package. Like the ULTRA series this 4K touch display features commercial grade heat tempered anti-glare glass and up to 20 points of touch. Rated for 50,000 hours the LITE has all the reliability you've come to expect from TouchView Interactive.

In this cost effective model we have removed the Android operating system allowing for ease of use with Windows, Chrome, and MAC devices. An optional Windows OPS standard, slot in PC is available. The LITE series, available in 65" and 75" provides the power and flexibility of a personal device in a large format display.

Windows OPS PC

Both the ULTRA series and the LITE series are available for use with a Windows OPS slot-in PC.



The Open Pluggable System is the Intel standard and allows for a variety of options with regards to chipset, memory, and storage.

Using the OPS-PC provides access to a perpetual license for Qwizdom OKTOPUS, a leading interactive

presentation and collaboration software.

OKTOPUS allows the ability to annotate and work over or alongside any software application, your existing content, or over a web browser. Instructors can create and instantly share content with more than 70 subject specific tools.



Qwizdom **OKTOPUS**

INTERACTIVE SOLUTIONS FOR USE IN:



EDUCATION



HOSPITALITY



FINANCE



MANUFACTURING



GOVERNMENT

MDM, TouchView Remote Device Management The Only Solution Built Around the Needs of Customers

DISTRIBUTION
TouchView allows distribution and manage settings, policies, apps, and contents with uniform updates

CONTROL
TouchView provides you with tools capable of granularly managing the restrictions of devices at different levels

MONITORING
TouchView offers tools to monitor device use, allowing you to remotely act on devices in case of loss or theft

SECURITY
TouchView complies with the requirements of the GDPR protecting from improper use of devices